

# State of Wyoming Corner Record

(In compliance with the **CORNER PERPETUATION AND FILING ACT**, Wyoming Statutes, 1997 Section 33-29-140 et. seq. and the Rules and Regulations of the Board of Professional Engineers and Professional Land Surveyors)

Reverse side of this form may be used if more space is needed.

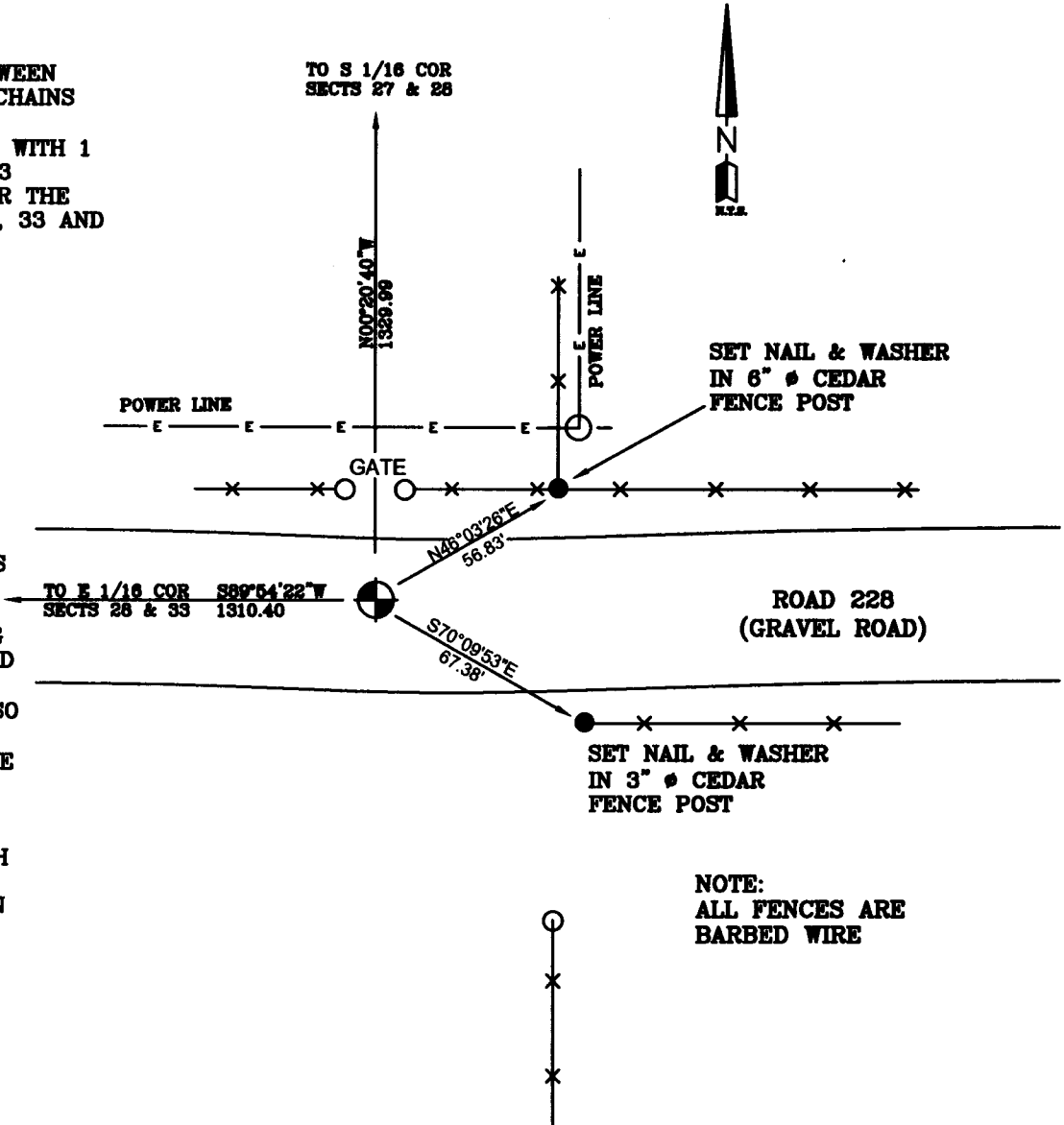
Record of original survey and citation of source of historical information (if corner is lost or obliterated). Description of corner monumentation evidence found and/or monument and accessories established to perpetuate the location of this corner. Sketch of relative location of monument, accessories, and reference points with course and distance to adjacent corner(s) (if determined in this survey). Method and rationale for reestablishment of lost or obliterated corner.

**G.L.O. RECORD:**

VARIATION 15°45'E  
 NORTH ALONG THE LINE BETWEEN  
 SECTIONS 33 AND 34 80.00 CHAINS  
 AND SET A LIMESTONE  
 20"X8"X4", 10" DEEP MARKED WITH 1  
 NOTCH ON THE S SIDE AND 3  
 NOTCHES ON THE E SIDE FOR THE  
 CORNER TO SECTIONS 27, 28, 33 AND  
 34.

AT THE CORNER:  
 FOUND NOTHING.  
 PLACED A 2 1/2" ALUMINUM  
 CAP SET ON A 5/8" X 24"  
 REBAR, IN GRAVEL RD., 6"  
 BELOW SURFACE, STAMPED AS  
 SHOWN.

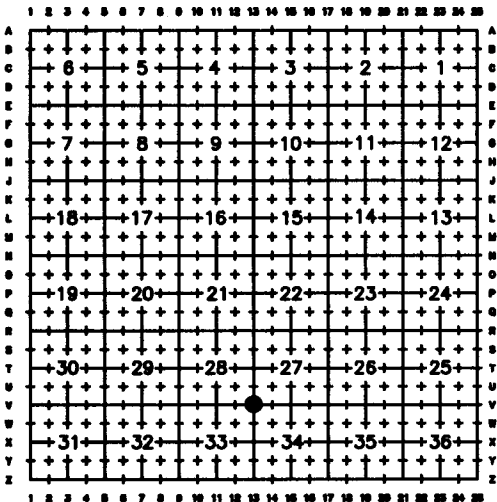
MONUMENT WAS RESET USING  
 EXISTING FENCES ALONG ROAD  
 228 AND NOTES TAKEN FROM  
 A SURVEY OF ROAD 228 (ALSO  
 KNOWN AS BRANCH COUNTY  
 ROAD 66) PERFORMED BY THE  
 LARAMIE COUNTY ENGINEER  
 LOCATED IN FIELD BOOK #7,  
 PAGES 44-49, DATED 1921  
 AND FROM A MAP OF BRANCH  
 COUNTY ROAD #66 DATED  
 SEPT. 1921, BOTH ON FILE IN  
 THE LARAMIE COUNTY COURT  
 HOUSE.



Date of Field Work: 11/18/08

Office Reference: RABQU

**Cross Index Plat**



Firm/Agency, Address

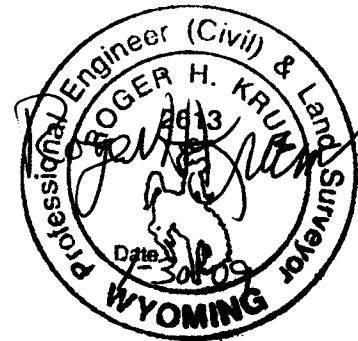
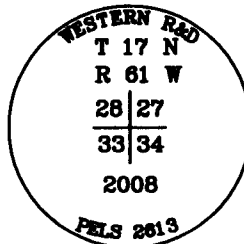
Western R&D, Ltd.  
 5809 Yellowstone Rd, Suite B  
 Cheyenne, Wyoming 82009

Telephone Number: (307) 632-5656

● Denotes Monument Set

This corner record was prepared by me or under my direction and supervision.

SEAL & SIGNATURE



Corner Name SOUTHEAST CORNER Section 28, T 17 N, R 61 W, 6th P.M.  
 County: LARAMIE Wyoming

Cross-Index No.: Y-13

SBREPELS/PLSW: March 1994; PLSW January 1998

